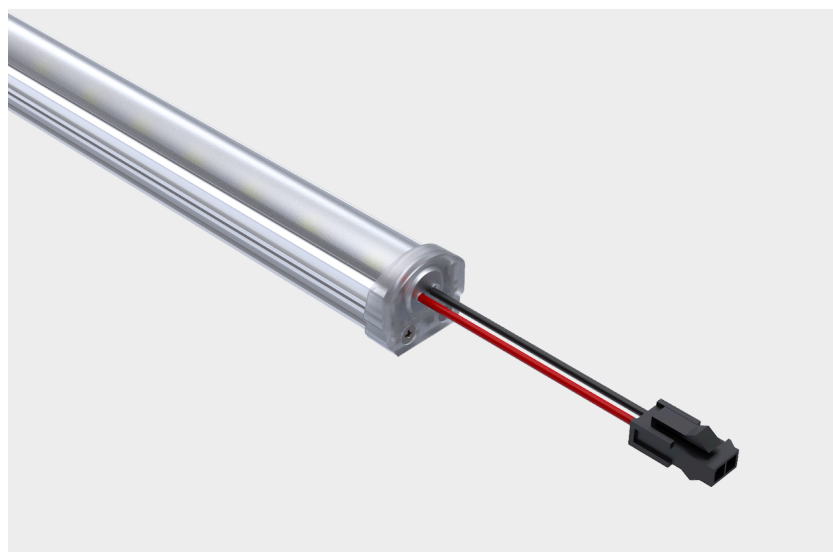




# Cove 1 - Frosted Led Bar



## Housing

Matt natural anodized, aluminum extrusion profile and mounting accessories with plastic end cap.

## Optics

Frosted diffusing polycarbonate lens with lambertian light distribution.

## Led

High-efficacy mid power LED with CRI>80, achieving L70B50  $\geq$  50,000 hours of lifetime.

## Driver

24Vdc external type. Constant voltage output driver with high efficiency.

Type Code	Power (w)	CCT (K)	Light Output (lm)	CRI	V/Hz	Weight (Kg)	L (mm)
SDCVIB.135.2.30	2	3000	180	>80	24V DC	0,04	135
SDCVIB.135.2.40	2	4000	190	>80	24V DC	0,04	135
SDCVIB.260.4.30	4	3000	310	>80	24V DC	0,07	260
SDCVIB.260.4.40	4	4000	330	>80	24V DC	0,07	260
SDCVIB.505.8.30	8	3000	700	>80	24V DC	0,14	505
SDCVIB.505.8.40	8	4000	745	>80	24V DC	0,14	505
SDCVIB. 1000.16.30	16	3000	1405	>80	24V DC	0,28	1000
SDCVIB. 1000.16.40	16	4000	1560	>80	24V DC	0,28	1000
SDCVIB. 1245.20.30	20	3000	1780	>80	24V DC	0,34	1245
SDCVIB. 1245.20.40	20	4000	1900	>80	24V DC	0,34	1245
SDCVIB. 1495.24.30	24	3000	2145	>80	24V DC	0,41	1495
SDCVIB. 1495.24.40	24	4000	2285	>80	24V DC	0,41	1495

