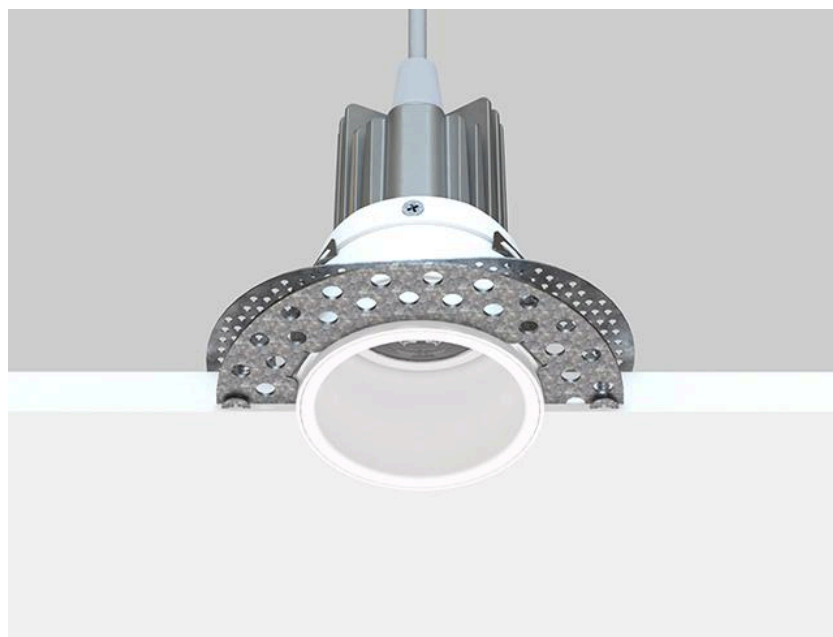




DG 1006 SAT



Housing

Aluminum injection frame with electrostatic powder coating and die-cast aluminum heatsink.

Optics

Highly efficient PMMA lens, designed specially for High Power LED.

Led

High-efficacy High Power LED with CRI>80, achieving L70B50 ≥ 50,000 hours of lifetime.

Driver

Constant current output LED driver with high efficiency and pf >0,8.

Options

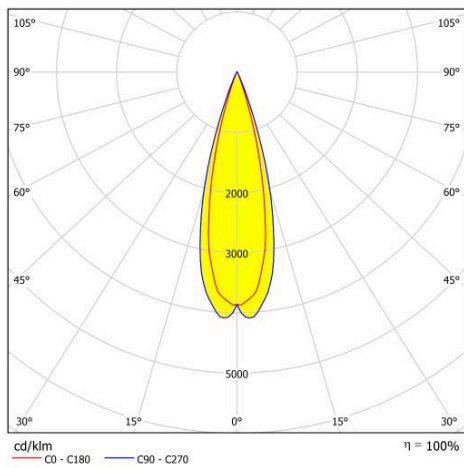
Dimming via DALI



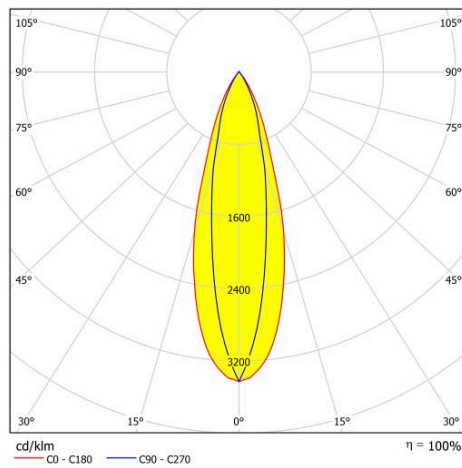
Ral 9016 Ral 9005 Ral 9006

Type Code	Power (w)	CCT (K)	Light Output (lm)	CRI	V/Hz	Weight (Kg)	Cut-out Size (mm)	Beam Angle
DGSAT.060.6.30.25	6	3000	470	>80	220 - 240 / 50 - 60	0,3	Ø75	25°
DGSAT.060.6.40.25	6	4000	540	>80	220 - 240 / 50 - 60	0,3	Ø75	25°
DGSAT.060.6.30.35	6	3000	480	>80	220 - 240 / 50 - 60	0,3	Ø75	35°
DGSAT.060.6.40.35	6	4000	510	>80	220 - 240 / 50 - 60	0,3	Ø75	35°
DGSAT.060.6.30.60	6	3000	360	>80	220 - 240 / 50 - 60	0,3	Ø75	60°
DGSAT.060.6.40.60	6	4000	385	>80	220 - 240 / 50 - 60	0,3	Ø75	60°
DGSAT.060.8.30.25	8	3000	615	>80	220 - 240 / 50 - 60	0,3	Ø75	25°
DGSAT.060.8.40.25	8	4000	670	>80	220 - 240 / 50 - 60	0,3	Ø75	25°
DGSAT.060.8.30.35	8	3000	630	>80	220 - 240 / 50 - 60	0,3	Ø75	35°
DGSAT.060.8.40.35	8	4000	660	>80	220 - 240 / 50 - 60	0,3	Ø75	35°
DGSAT.060.8.30.60	8	3000	465	>80	220 - 240 / 50 - 60	0,3	Ø75	60°
DGSAT.060.8.40.60	8	4000	515	>80	220 - 240 / 50 - 60	0,3	Ø75	60°
DGSAT.060.11.30.25	11	3000	800	>80	220 - 240 / 50 - 60	0,3	Ø75	25°
DGSAT.	11	4000	900	>80	220 - 240 / 50 - 60	0,3	Ø75	25°

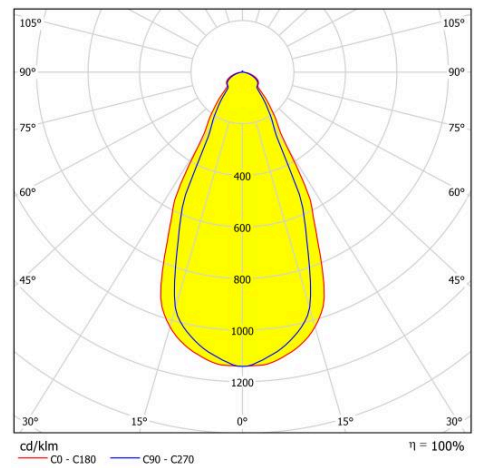
Type Code	Power (w)	CCT (K)	Light Output (lm)	CRI	V/Hz	Weight (Kg)	Cut-out Size (mm)	Beam Angle
060.11.40.25	11	4000	900	>80	60	0,3	Ø75	25°
DGSAT. 060.11.30.35	11	3000	800	>80	220 - 240 / 50 - 60	0,3	Ø75	35°
DGSAT. 060.11.40.35	11	4000	870	>80	220 - 240 / 50 - 60	0,3	Ø75	35°
DGSAT. 060.11.30.60	11	3000	610	>80	220 - 240 / 50 - 60	0,3	Ø75	60°
DGSAT. 060.11.40.60	11	4000	650	>80	220 - 240 / 50 - 60	0,3	Ø75	60°



DGSAT.060.11.40.25



DGSAT.060.11.40.35



DGSAT.060.11.40.60

